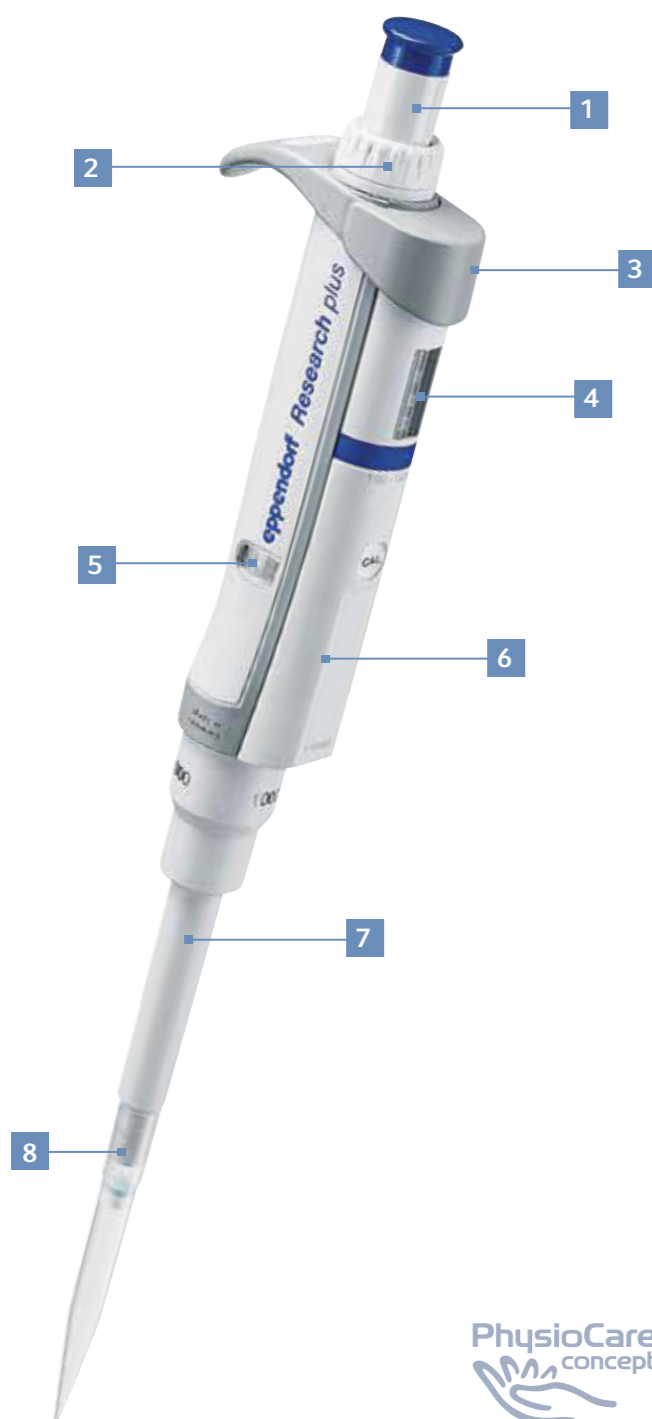


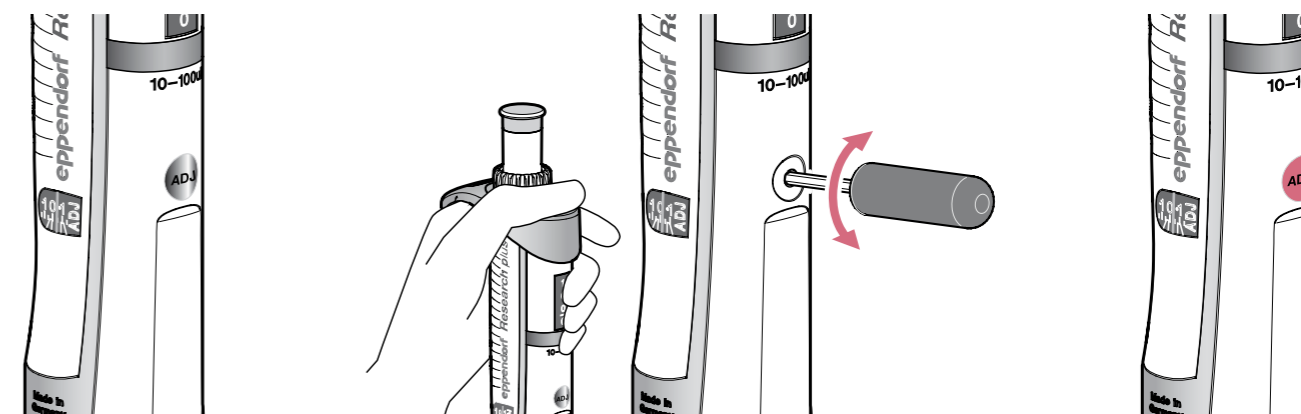
Eppendorf Research[®] plus

1. **Control Button:** Very low operating forces and color coding for easy identification of pipette volume. Ergonomic height even at maximum volume to limit strain on thumbs
2. **Volume Setting:** Set your desired volume in just a few turns even when moving from minimum to maximum volume
3. **Ejector:** Very low operating force and positioned in such a way that thumb strain is reduced when moving to eject tips
4. **Volume Display:** 4 digit display with magnifying window to allow for more accurate volume setting and easier volume identification
5. **User adjustment:** Option to temporarily adjust the pipetting volume by up to ± 2 % to offset inaccuracies when working with difficult liquids (e.g., warm, cold, volatile or high density liquids). Return to factory adjustment without calibration
6. **Eppendorf TrackIT:** Embedded RFID data chip for heightened traceability in combination with Eppendorf TrackIT, see page 71 for details
7. **Eppendorf PerfectPiston[®]:** Ultralight, chemically resistant piston provides for overall weight reduction of the pipette
8. **Spring loaded tip cone:** Improves ergonomics by lowering tip attachment forces and reproducibility by ensuring consistent tip attachment



www.eppendorf.com/researchplus-360

Watch our 360° view of the Research plus on our website!



User adjustment: User-friendly option to temporarily adjust the pipetting volume by up to ± 2 % to offset inaccuracies when working with difficult liquids (e.g., warm, cold, volatile or high density liquids) or when external conditions change (e.g., altitude or use of elongated tips). Change back to factory adjustment without calibration

Description

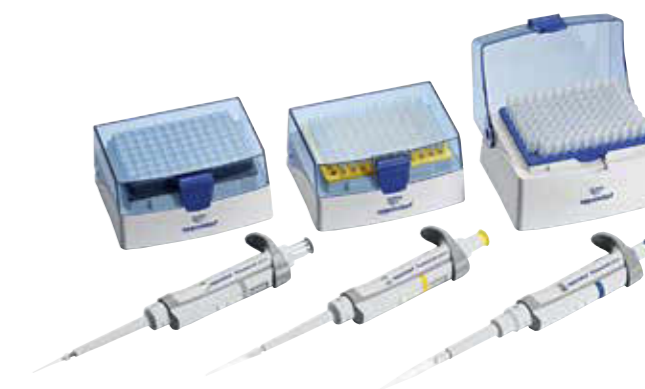
The Eppendorf Research plus is one of the most commonly used pipettes in the world. Besides safety and robustness the main focus of its design lay on ergonomics. The Research plus protects the health of our customers during their daily work. It has pioneered the renowned PhysioCare Concept[®] and thus reduced the strain on hand and arm during pipetting essentially. The Research plus is the pipette family with the lowest weight and lowest operation forces at Eppendorf. Lower operation forces can only be reached with our Eppendorf electronic pipettes. The spring loaded tip cone ensures low tip attachment and ejection forces. The Research plus has the ability to be autoclaved without the need to be disassembled. Fixed-volume pipettes and multichannel options are available; the Research plus pipette will become an indispensable tool in your laboratory.

Applications

- > Forward pipetting
- > Reverse pipetting
- > Removal of supernatants
- > Sample mixing
- > Phase extraction
- > Volume determination
- > Filling of plates, gels, and reaction vessels



The large 4 digit volume display with magnifying window is easy to read and allows for more accurate volume setting



Get ready for a threefold enjoyable pipetting experience with one of the most advanced and ergonomic pipettes in the world. The economic Research plus triple-pack is available in three different versions. In addition to three Research plus pipettes, each pack contains one set of matching Eppendorf tips and one of the popular Eppendorf ballpoint pens.

► Pipette service and maintenance contracts can be found on page 420. Pipette tips can be found on page 44 onward.

Eppendorf Research® plus



Ordering information

Volume range	Color code	Rel. systematic error ¹⁾	Abs. systematic error ¹⁾	Rel. random error ¹⁾	Abs. random error ¹⁾	Order no.
Eppendorf Research® plus, single-channel, fixed						
10 µL	medium gray	±1.2 %	±0.12 µL	±0.6 %	±0.06 µL	3121 000.015
20 µL	light gray	±0.8 %	±0.16 µL	±0.3 %	±0.06 µL	3121 000.031
10 µL	yellow	±1.2 %	±0.12 µL	±0.6 %	±0.06 µL	3121 000.023
20 µL	yellow	±1.0 %	±0.2 µL	±0.3 %	±0.06 µL	3121 000.040
25 µL	yellow	±1.0 %	±0.25 µL	±0.3 %	±0.08 µL	3121 000.058
50 µL	yellow	±0.7 %	±0.35 µL	±0.3 %	±0.15 µL	3121 000.066
100 µL	yellow	±0.6 %	±0.6 µL	±0.2 %	±0.2 µL	3121 000.074
200 µL	yellow	±0.6 %	±1.2 µL	±0.2 %	±0.4 µL	3121 000.082
200 µL	blue	±0.6 %	±1.2 µL	±0.2 %	±0.4 µL	3121 000.090
250 µL	blue	±0.6 %	±1.5 µL	±0.2 %	±0.5 µL	3121 000.104
500 µL	blue	±0.6 %	±3.0 µL	±0.2 %	±1.0 µL	3121 000.112
1,000 µL	blue	±0.6 %	±6.0 µL	±0.2 %	±2.0 µL	3121 000.120

¹⁾ The error data, according to EN ISO 8655, only apply if original Eppendorf tips are used. Technical specifications are subject to change. Errors and omissions excepted.

Ordering information

Volume range	Color code	Volume	Rel. systematic error ¹⁾	Abs. systematic error ¹⁾	Rel. random error ¹⁾	Abs. random error ¹⁾	Order no.
Eppendorf Research® plus, single-channel, variable, incl. epT.I.P.S.® Box							
0.1 – 2.5 µL	dark gray	0.1 µL	±48.0 %	±0.048 µL	±12.0 %	±0.012 µL	3120 000.011
		0.25 µL	±12.0 %	±0.03 µL	±6.0 %	±0.015 µL	
		1.25 µL	±2.5 %	±0.031 µL	±1.5 %	±0.019 µL	
		2.5 µL	±1.4 %	±0.035 µL	±0.7 %	±0.018 µL	
0.5 – 10 µL	medium gray	0.5 µL	±8.0 %	±0.04 µL	±5.0 %	±0.025 µL	3120 000.020
		1 µL	±2.5 %	±0.025 µL	±1.8 %	±0.018 µL	
		5 µL	±1.5 %	±0.075 µL	±0.8 %	±0.04 µL	
		10 µL	±1.0 %	±0.1 µL	±0.4 %	±0.04 µL	
2 – 20 µL	light gray	2 µL	±5.0 %	±0.1 µL	±1.5 %	±0.03 µL	3120 000.097
		10 µL	±1.2 %	±0.12 µL	±0.6 %	±0.06 µL	
		20 µL	±1.0 %	±0.2 µL	±0.3 %	±0.06 µL	
2 – 20 µL	yellow	2 µL	±5.0 %	±0.1 µL	±1.5 %	±0.03 µL	3120 000.038
		10 µL	±1.2 %	±0.12 µL	±0.6 %	±0.06 µL	
		20 µL	±1.0 %	±0.2 µL	±0.3 %	±0.06 µL	
10 – 100 µL	yellow	10 µL	±3.0 %	±0.3 µL	±1.0 %	±0.1 µL	3120 000.046
		50 µL	±1.0 %	±0.5 µL	±0.3 %	±0.15 µL	
		100 µL	±0.8 %	±0.8 µL	±0.2 %	±0.2 µL	
20 – 200 µL	yellow	20 µL	±2.5 %	±0.5 µL	±0.7 %	±0.14 µL	3120 000.054
		100 µL	±1.0 %	±1.0 µL	±0.3 %	±0.3 µL	
		200 µL	±0.6 %	±1.2 µL	±0.2 %	±0.4 µL	
30 – 300 µL	orange	30 µL	±2.5 %	±0.75 µL	±0.7 %	±0.21 µL	3120 000.100
		150 µL	±1.0 %	±1.5 µL	±0.3 %	±0.45 µL	
		300 µL	±0.6 %	±1.8 µL	±0.2 %	±0.6 µL	
100 – 1,000 µL	blue	100 µL	±3.0 %	±3.0 µL	±0.6 %	±0.6 µL	3120 000.062
		500 µL	±1.0 %	±5.0 µL	±0.2 %	±1.0 µL	
		1,000 µL	±0.6 %	±6.0 µL	±0.2 %	±2.0 µL	
Eppendorf Research® plus, single-channel, variable, incl. epT.I.P.S.® sample bag							
0.5 – 5 mL	violet	0.5 mL	±2.4 %	±0.012 mL	±0.6 %	±0.003 mL	3120 000.070
		2.5 mL	±1.2 %	±0.03 mL	±0.25 %	±0.006 mL	
		5 mL	±0.6 %	±0.03 mL	±0.15 %	±0.008 mL	
1 – 10 mL	turquoise	1 mL	±3.0 %	±0.03 mL	±0.6 %	±0.006 mL	3120 000.089
		10 mL	±0.8 %	±0.04 mL	±0.2 %	±0.01 mL	
		10 mL	±0.6 %	±0.06 mL	±0.15 %	±0.015 mL	

¹⁾ The error data, according to EN ISO 8655, only apply if original Eppendorf tips are used. Technical specifications are subject to change. Errors and omissions excepted.

Ordering information

Description	Order no.
Eppendorf Research® plus 3-pack , single-channel, variable, incl. epT.I.P.S.® Box or sample bag and ballpoint pen	
Option 1: 0.5-10 µL, 10-100 µL, 100-1,000 µL	3120 000.909
Option 2: 2-20 µL yellow, 20-200 µL, 100-1,000 µL	3120 000.917
Option 3: 100-1,000 µL, 0.5-5 mL, 1-10 mL	3120 000.925

► Pipette service and maintenance contracts can be found on page 420. Pipette tips can be found on page 44 onward.

Eppendorf Research® plus



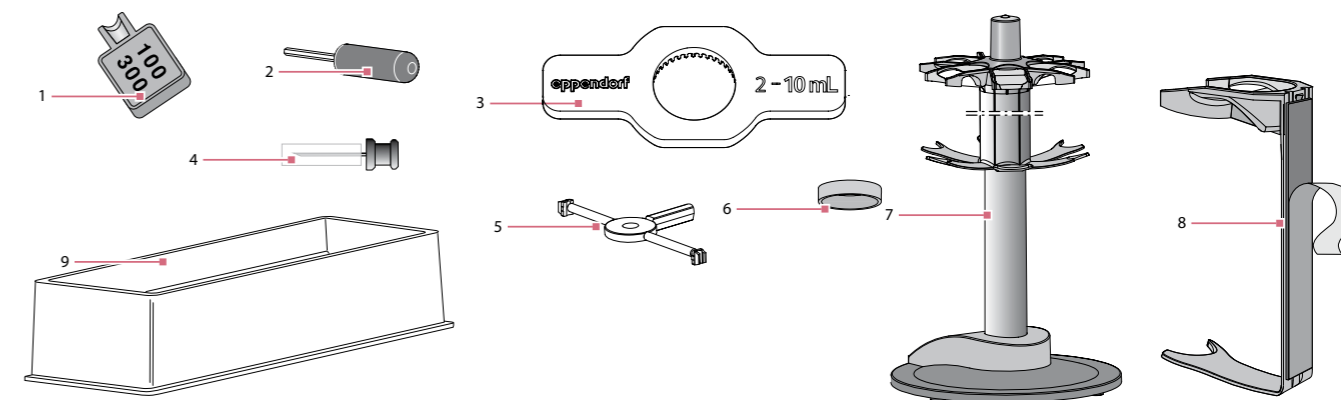
Ordering information

Volume range	Color code	Volume	Rel. systematic error ¹⁾	Abs. systematic error ¹⁾	Rel. random error ¹⁾	Abs. random error ¹⁾	Order no.
Eppendorf Research® plus, 8-channel, variable							
0.5 – 10 µL	medium gray	0.5 µL	±12.0 %	±0.06 µL	±8.0 %	±0.04 µL	3122 000.019
		1 µL	±8.0 %	±0.08 µL	±5.0 %	±0.05 µL	
		5 µL	±4.0 %	±0.2 µL	±2.0 %	±0.1 µL	
		10 µL	±2.0 %	±0.2 µL	±1.0 %	±0.1 µL	
10 – 100 µL	yellow	10 µL	±3.0 %	±0.3 µL	±2.0 %	±0.2 µL	3122 000.035
		50 µL	±1.0 %	±0.5 µL	±0.8 %	±0.4 µL	
		100 µL	±0.8 %	±0.8 µL	±0.3 %	±0.3 µL	
30 – 300 µL	orange	30 µL	±3.0 %	±0.9 µL	±1.0 %	±0.3 µL	3122 000.051
		150 µL	±1.0 %	±1.5 µL	±0.5 %	±0.75 µL	
		300 µL	±0.6 %	±1.8 µL	±0.3 %	±0.9 µL	
Eppendorf Research® plus, 12-channel, variable							
0.5 – 10 µL	medium gray	0.5 µL	±12.0 %	±0.06 µL	±8.0 %	±0.04 µL	3122 000.027
		1 µL	±8.0 %	±0.08 µL	±5.0 %	±0.05 µL	
		5 µL	±4.0 %	±0.2 µL	±2.0 %	±0.1 µL	
		10 µL	±2.0 %	±0.2 µL	±1.0 %	±0.1 µL	
10 – 100 µL	yellow	10 µL	±3.0 %	±0.3 µL	±2.0 %	±0.2 µL	3122 000.043
		50 µL	±1.0 %	±0.5 µL	±0.8 %	±0.4 µL	
		100 µL	±0.8 %	±0.8 µL	±0.3 %	±0.3 µL	
30 – 300 µL	orange	30 µL	±3.0 %	±0.9 µL	±1.0 %	±0.3 µL	3122 000.060
		150 µL	±1.0 %	±1.5 µL	±0.5 %	±0.75 µL	
		300 µL	±0.6 %	±1.8 µL	±0.3 %	±0.9 µL	

¹⁾ The error data, according to EN ISO 8655, only apply if original Eppendorf tips are used. Technical specifications are subject to change. Errors and omissions excepted.

► Pipette service and maintenance contracts can be found on page 420. Pipette tips can be found on page 44 onward.

Technical specifications subject to change.



1. Cutting tool
2. Adjustment tool
3. Pipette wrench 5 mL/10 mL
4. Pin
5. Safety plug tool
6. Locking ring
7. Pipette carousel
8. Holder or wall mount
9. Reagent reservoir Tip-Tub

Accessories

Description	Order no.
Pipette carousel , with 6 holders	3115 000.003
Pipette holder , for Eppendorf Research® plus and Biomaster® 4830, for pipette carousel	3115 600.019
Pipette holder , wall mount, for Eppendorf Research® plus and Biomaster® 4830, with hook and loop strip	3115 000.020
Eppendorf Research® plus red adjustment seal ADJ , 1 set = 5 pieces	3120 636.005
Adjustment tool , for changing factory or secondary user adjustment	3120 633.006
Safety plug tools , 5 pieces	3120 639.004
Protection filter 5 mL , 10 filters with 1 filter sleeve, for 0.5 – 5 mL variable Eppendorf Reference® 2, Eppendorf Research® plus and Eppendorf Xplorer® (plus), color code: violet	4920 623.005
Protection filter 10 mL , 10 filters with 1 filter sleeve, for 1 – 10 mL variable Eppendorf Reference® 2, Eppendorf Research® plus and Eppendorf Xplorer® (plus), color code: turquoise	4920 624.001
O-ring for tip cones, 24 pcs. , red, for 100 and 300 µL multi-channel pipettes, with mounting aid (1 set = 24 pcs)	3122 611.000
Cutting tool , for O-rings of 100 and 300 µL multi-channel pipettes	3122 610.003
Key , for detachment of 2 – 10 mL pipettes lower parts, for Eppendorf Research® plus, Eppendorf Reference® 2, Eppendorf Xplorer®	3120 634.002
Locking ring , to prevent spring action of 10 mL to 1,000 µL single channel pipettes tip cones	3120 635.009
Tip-Tub reagent reservoir 70 mL , autoclavable reservoir for aspirating liquids with multi-channel pipettes, 1 set = 10 reservoirs and 10 lids	0030 058.607
Pipette grease with lint-free applicator	0013 022.153
Eppendorf TrackIT , RFID Reader and Software	3903 000.014

► For more information go to www.eppendorf.com/Researchplus

Your local distributor: www.eppendorf.com/contact
Eppendorf AG · 22331 Hamburg · Germany · eppendorf@eppendorf.com · www.eppendorf.com